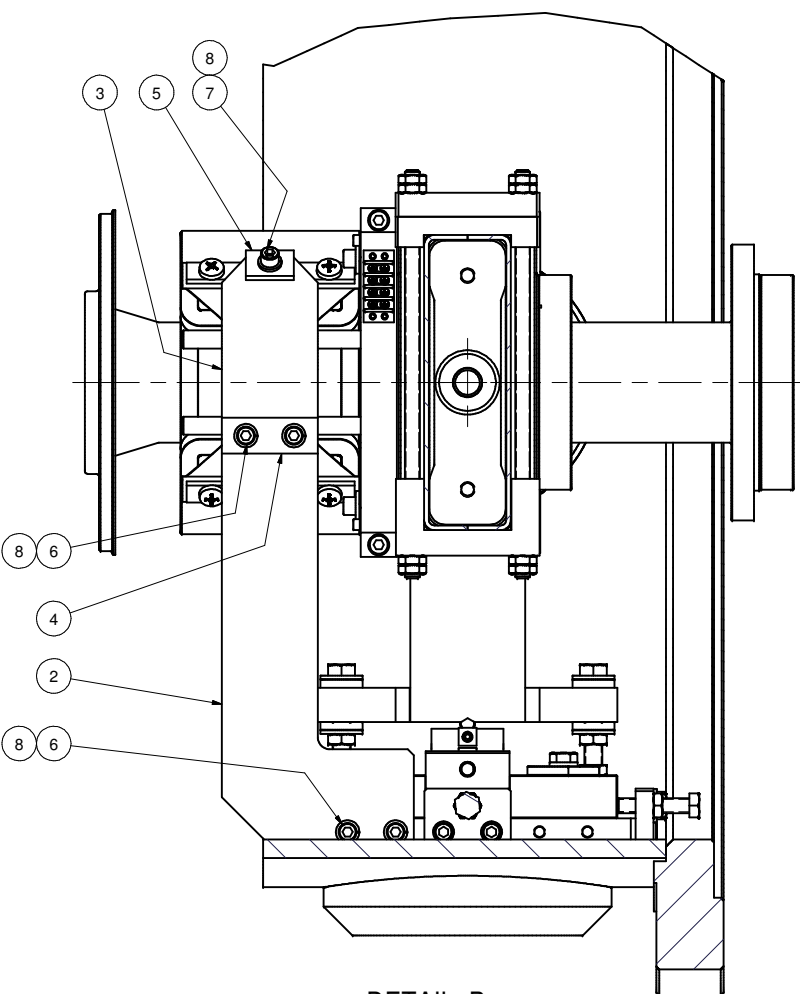
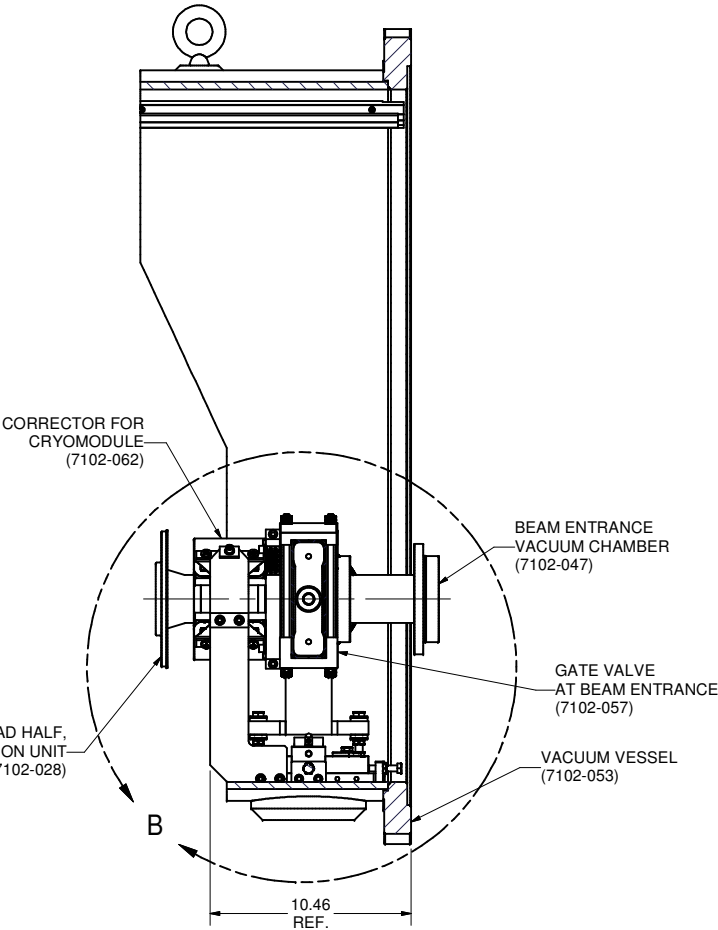
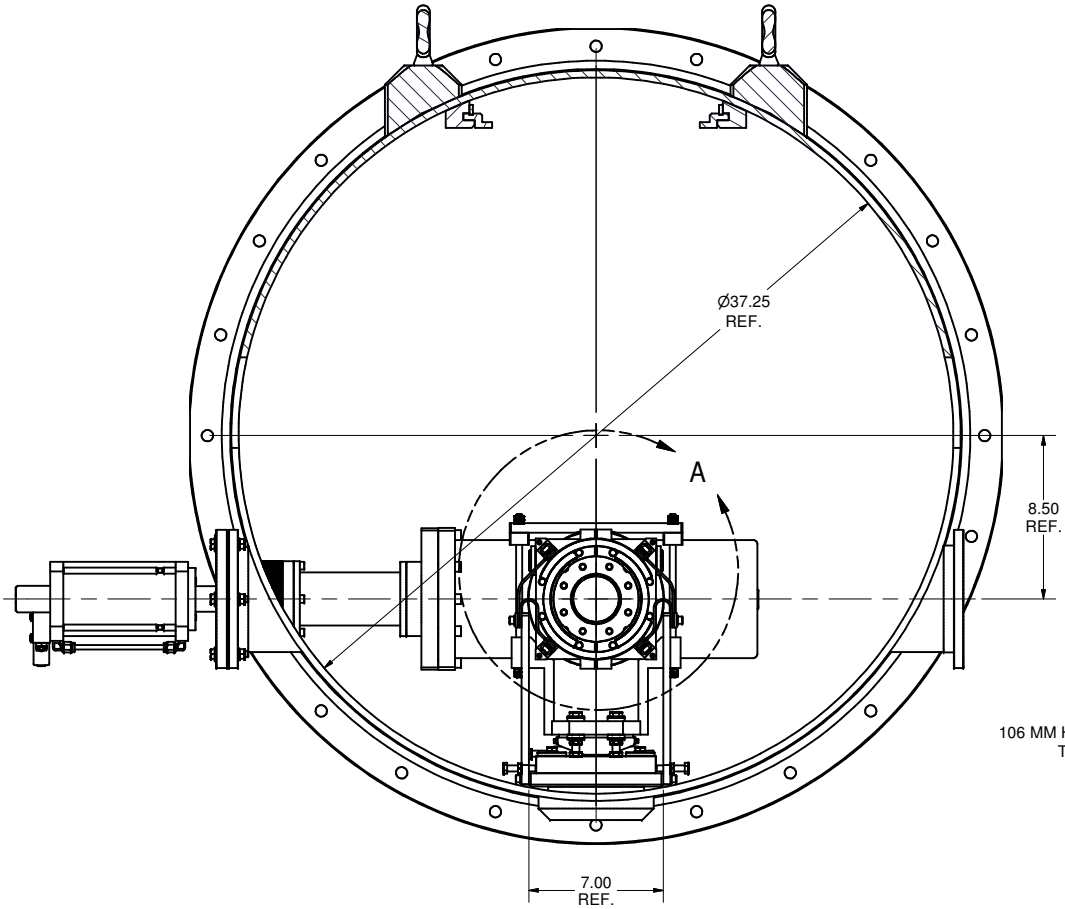
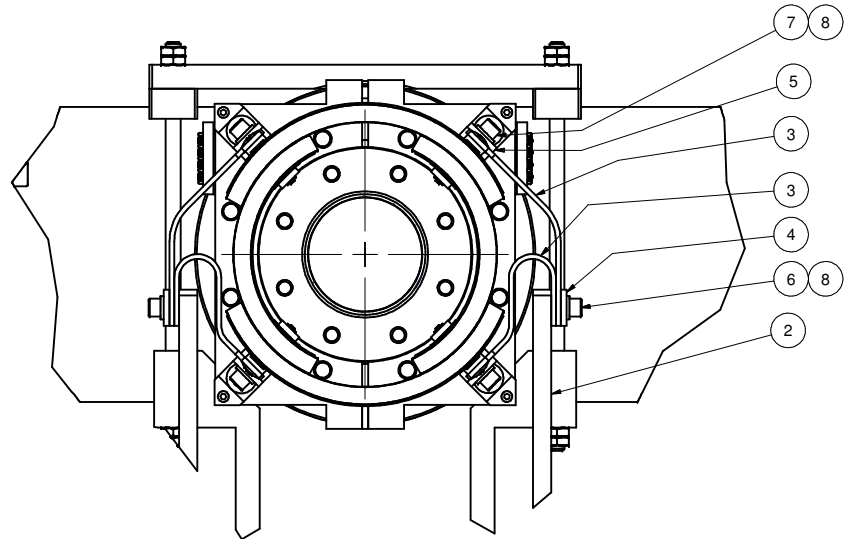
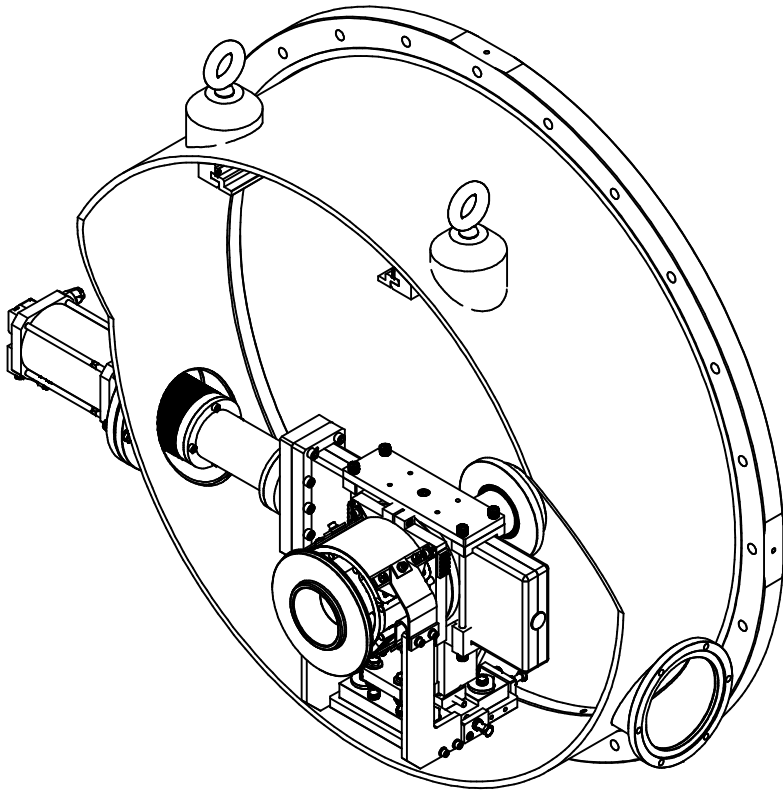


REVISIONS			
SYM.	ZONE	DESCRIPTION	DATE APP.



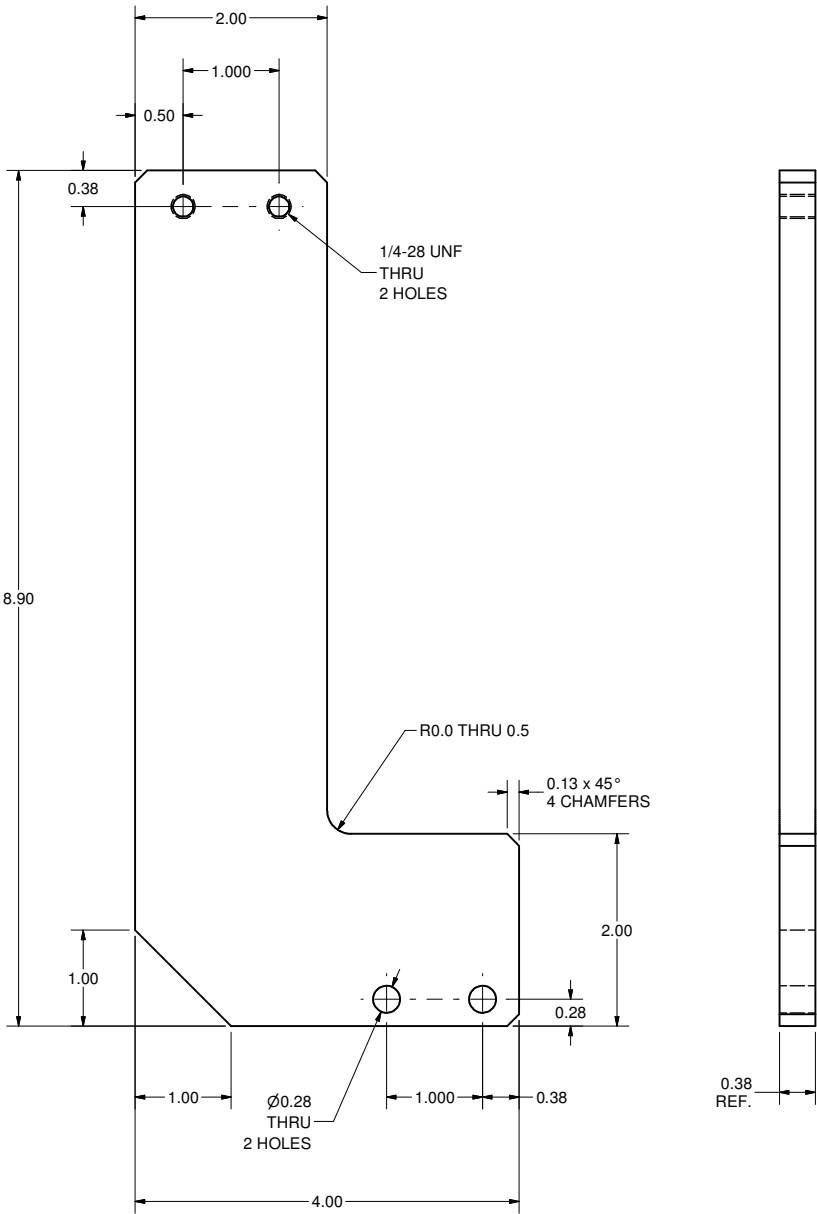
1 CORRECTOR HEAT SINK ASSEMBLY  
FILE NAME: 7102-086  
SHEET NO.: 1  
DFT. SCALE: 1:5  
MATERIAL:  
QTY: 1 PER CRYOMODULE  
NOTES:



8	Purchased	1/4 Spring Washer, SS	12		McMaster-Carr's 92146A029	
7	Purchased	1/4-20 x 1/2 Socket Head Cap Screw, SS	4		McMaster-Carr's 92196A537	
6	Purchased	1/4-28 x 3/4 Socket Head Cap Screw, SS	8		McMaster-Carr's 92196A321	
5	7102-086 (Sh.2)	CLAMP PLATE 2	4			
4	7102-086 (Sh.2)	CLAMP PLATE 1	2			
3	7102-086 (Sh.2)	FLEX JUMPER	4			
2	7102-086 (Sh.2)	HEAT SINK LEG	2			
1	7102-086 (Sh.1)	CORRECTOR HEAT SINK ASSEMBLY	1			

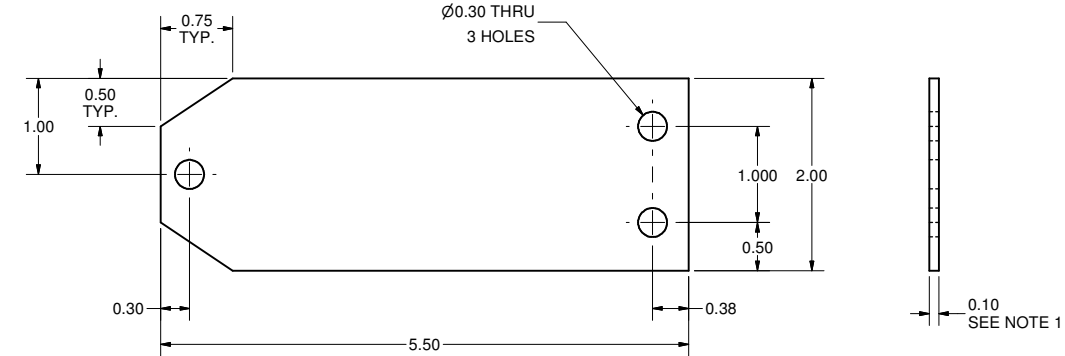
ITEM	DWG. NO.	DESCRIPTION	G1	G2	G3	REMARKS	REV.
PLOT DATE: 1/10/08 CAD FILE NAME: 7102-086.idw			QUANTITY				
UNLESS OTHERWISE SPECIFIED: DIMENSIONS ARE IN INCHES: TOLERANCES ON: .0 ± .02 .00 ± .010 FRACTIONS ± 1/32 ANGLES ± 0.5° ALL SURFACES			CORNELL UNIVERSITY FLOYD R. NEWMAN LABORATORY ITHACA, NY 14853				
ERL INJECTOR CRYOMODULE CORRECTOR HEAT SINK CORRECTOR HEAT SINK ASSEMBLY: ORTHO AND ISO VIEWS, DETAIL A			DRAWN BY vm			DATE 1/10/2008	SCALE D
CHECKED BY: VM APPROVED BY: VM			DRAWN FOR M.Liepe			7102-086 SH. NO. 1 OF 2	REV.

REVISIONS			
SYM.	ZONE	DESCRIPTION	DATE APP.



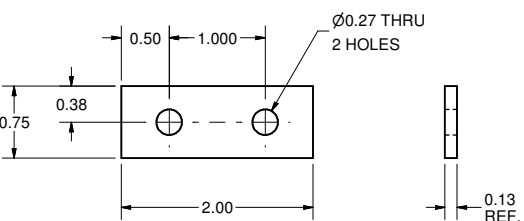
2 HEAT SINK LEG

FILE NAME: 7102-086  
SHEET NO.: 2  
DFT. SCALE: 1:1  
MATERIAL: 3/8" OFE COPPER SHEET  
QTY: 2 PER ASSEMBLY  
NOTES:



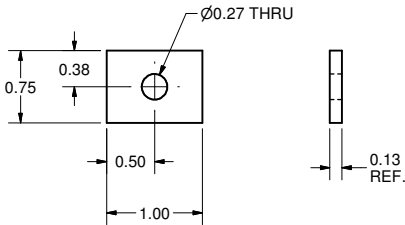
3 FLEX JUMPER

FILE NAME: 7102-086  
SHEET NO.: 2  
DFT. SCALE: 1:1  
MATERIAL: 0.002" OFE COPPER FOIL  
QTY: 4 PER ASSEMBLY (200 FOILS)  
NOTES: 1. EVERY FLEX JUMPER MADE OF 50 PIECES (200 TOTAL)  
2. USE NO OIL, ALCOHOL ONLY.



4 CLAMP PLATE 1

FILE NAME: 7102-086  
SHEET NO.: 2  
DFT. SCALE: 1:1  
MATERIAL: 1/8" 304L ST. STEEL SHEET (OR 1/8" x 3/4" STRIP)  
QTY: 2 PER ASSEMBLY  
NOTES:



5 CLAMP PLATE 2

FILE NAME: 7102-086  
SHEET NO.: 2  
DFT. SCALE: 1:1  
MATERIAL: 1/8" 304L ST. STEEL SHEET (OR 1/8" x 3/4" STRIP)  
QTY: 4 PER ASSEMBLY  
NOTES:

		ITEM	DWG. NO.	DESCRIPTION			G1	G2	G3	REMARKS		REV.
								QUANTITY				
	PRINT DISTR.	PLOT DATE: 1/10/08 CAD FILE NAME: 7102-086.idw										
	7102-086 SH. NO. 2 OF 2	CR-1	UNLESS OTHERWISE SPECIFIED:  DIMENSIONS ARE IN INCHES: TOLERANCES ON: .0 ± .02 .00 ± .010 .000 ± .005 FRACTIONS ± 1/32 ANGLES ± 0.5° ALL SURFACES ✓		 CORNELL UNIVERSITY Floyd R. Newman Laboratory Ithaca, NY 14853  LABORATORY FOR ELEMENTARY-PARTICLE PHYSICS							
REV.		CHECKED BY: VM APPROVED BY: VM	DRAWN BY vm		DRAWN FOR M.Liepe		DATE 1/10/2008		SCALE		7102-086 SH. NO. 2 OF 2	